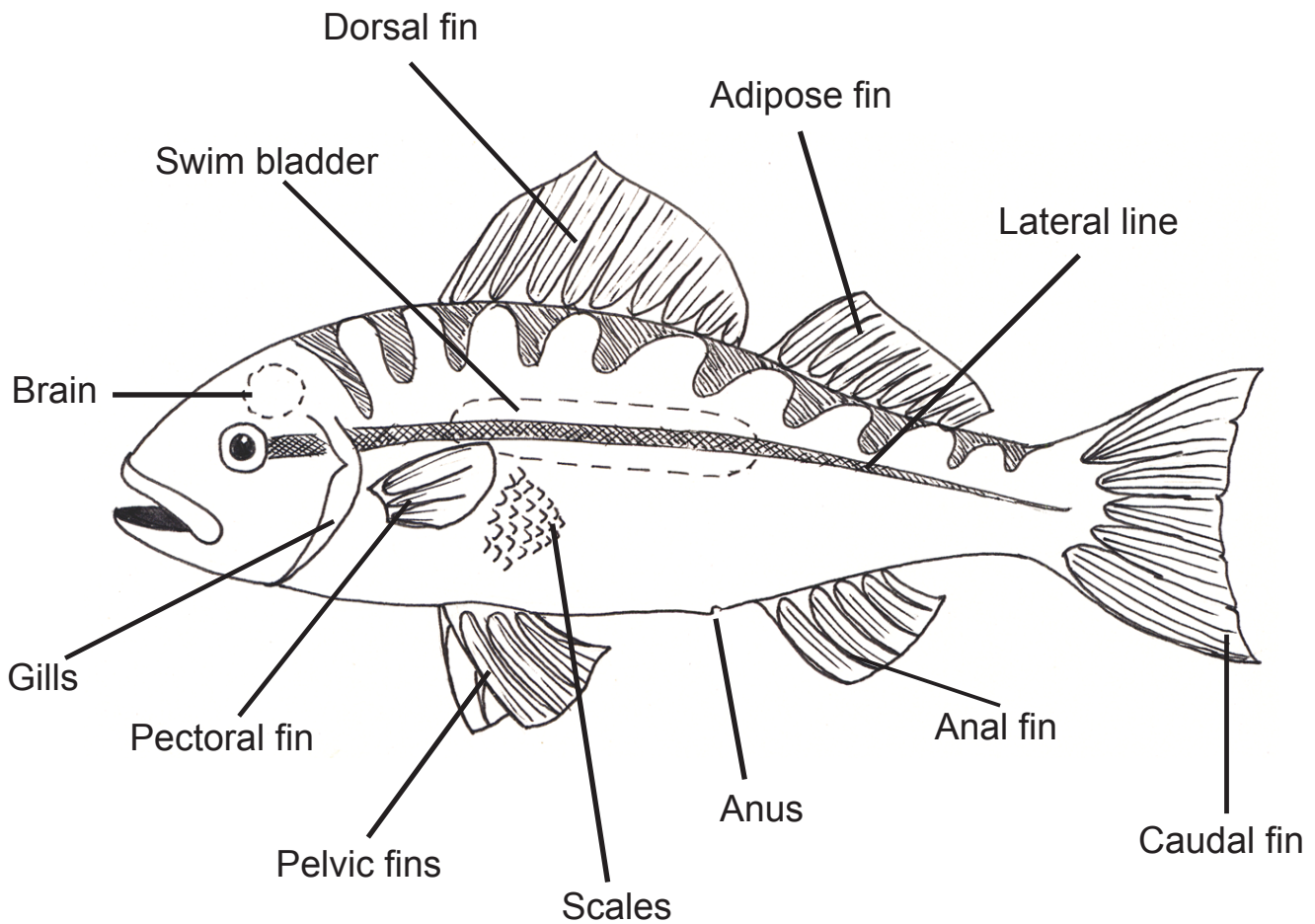


ANATOMY OF A FISH



Fish fins are used for swimming, stability and steering

Dorsal/anal fin Keeps fish level and stops it rolling

Caudal fin Propels fish forward and steers

Pelvic fins Keep fish level

Pectoral fins Brake and steer

Scales Protect the fish and make it waterproof

Gills Allow the fish to breath underwater

Lateral line A sensory organ that detects vibrations in the water

Swimbladder A hollow gas-filled organ that controls how a fish floats and its depth in the water. Fish without a swim bladder sink when they stop swimming.